

检测报告

编号: SZXEC2203148304

日期: 2022年09月26日 第1页,共6页

客户名称: 深圳市伟烽恒科技有限公司
客户地址: 深圳市宝安区西乡街道铁仔路华丰共乐工业区B栋厂房2层

样品名称: WF5803
型号: WF5803
客户参考信息: WF5803,WF183D,WF5803,WF5805,WF5010,WF5837,WF5840,
WF280,WF282,WF162, LGA4,LGA8,LGA16,WF186,WF184,
WF188,WF193,WF194DIP6,SOP6/8,DIL,QFN,BGA,NPT,TO8,
WF163,TO46,HTU31
制造商: 伟烽恒
原产国: China
以上样品及信息由客户提供。

SGS工作编号: RP22-024443 - SZ
样品接收日期: 2022年09月20日
检测周期: 2022年09月20日 - 2022年09月26日
检测要求: 根据客户要求检测
检测方法: 请参见下一页
检测结果: 请参见下一页

通标标准技术服务有限公司深圳分公司
授权签名

Mescal_Ye 叶晓键
批准签署人

scan to see the report



1BBE973F



Unless otherwise agreed in writing, this document is issued by the Company subject to its General Conditions of Service printed overleaf, available on request or accessible at <http://www.sgs.com/en/Terms-and-Conditions.aspx> and, for electronic format documents, subject to Terms and Conditions for Electronic Documents at <http://www.sgs.com/en/Terms-and-Conditions/Terms-e-Documents.aspx>. Attention is drawn to the limitation of liability, indemnification and jurisdiction issues defined therein. Any holder of this document is advised that information contained hereon reflects the Company's findings at the time of its intervention only and within the limits of Client's instructions, if any. The Company's sole responsibility is to its Client and this document does not exonerate parties to a transaction from exercising all their rights and obligations under the transaction documents. This document cannot be reproduced except in full, without prior written approval of the Company. Any unauthorized alteration, forgery or falsification of the content or appearance of this document is unlawful and offenders may be prosecuted to the fullest extent of the law. Unless otherwise stated the results shown in this test report refer only to the sample(s) tested.

Attention: To check the authenticity of testing /inspection report & certificate, please contact us at telephone: (86-755) 8307 1443, or email: CN.Doccheck@sgs.com

Room 101-901, Plant 4 & Room 101, Plant 2 & Room 101, Plant 3 & Room 301-501, Plant 3, Jianghao (Bantian) Industrial Plant Area, No. 430, Jihua Road, Bantian Community, Bantian Street, Longgang District, Shenzhen, Guangdong, China 518129 www.sgs.com.cn

中国·广东·深圳市龙岗区坂田街道坂田社区吉华路430号江源(坂田)工业厂区厂房4号101-901、2号101、3号101、3号301-501 邮编:518129 t(86-755) 25328888 sgs.china@sgs.com

检测报告

编号: SZXEC2203148304

日期: 2022年09月26日 第2页,共6页

检测结果:

检测样品描述:

样品编号	SGS样品ID	描述
SN1	SZX22-031483.002	"WF5803" (混合)

备注:

- (1) 1 mg/kg = 1 ppm = 0.0001%
- (2) MDL = 方法检测限
- (3) ND = 未检出 (< MDL)
- (4) "-" = 未规定

铅, 汞, 镉, 六价铬, 多溴联苯(PBBs), 多溴二苯醚(PBDEs), 邻苯二甲酸二丁酯 (DBP), 邻苯二甲酸丁苄酯(BBP), 邻苯二甲酸二(2-乙基己基)酯(DEHP)和邻苯二甲酸二异丁酯(DIBP)

检测方法: 参考IEC 62321-4:2013+AMD1:2017, IEC 62321-5:2013, IEC 62321-7-2:2017, IEC 62321-6:2015和IEC 62321-8:2017, 采用ICP-OES,UV-Vis和GC-MS进行分析.

检测项目	单位	MDL	002
镉 (Cd)	mg/kg	2	ND
铅 (Pb)	mg/kg	2	7
汞 (Hg)	mg/kg	2	ND
六价铬 (Cr(VI))	mg/kg	8	ND
多溴联苯之和(PBBs)	mg/kg	-	ND
一溴联苯	mg/kg	5	ND
二溴联苯	mg/kg	5	ND
三溴联苯	mg/kg	5	ND
四溴联苯	mg/kg	5	ND
五溴联苯	mg/kg	5	ND
六溴联苯	mg/kg	5	ND
七溴联苯	mg/kg	5	ND
八溴联苯	mg/kg	5	ND
九溴联苯	mg/kg	5	ND
十溴联苯	mg/kg	5	ND
多溴二苯醚之和(PBDEs)	mg/kg	-	ND
一溴二苯醚	mg/kg	5	ND
二溴二苯醚	mg/kg	5	ND
三溴二苯醚	mg/kg	5	ND
四溴二苯醚	mg/kg	5	ND
五溴二苯醚	mg/kg	5	ND



Unless otherwise agreed in writing, this document is issued by the Company subject to its General Conditions of Service printed overleaf, available on request or accessible at <http://www.sgs.com/en/Terms-and-Conditions.aspx> and, for electronic format documents, subject to Terms and Conditions for Electronic Documents at <http://www.sgs.com/en/Terms-and-Conditions/Terms-e-Documents.aspx>. Attention is drawn to the limitation of liability, indemnification and jurisdiction issues defined therein. Any holder of this document is advised that information contained hereon reflects the Company's findings at the time of its intervention only and within the limits of Client's instructions, if any. The Company's sole responsibility is to its Client and this document does not exonerate parties to a transaction from exercising all their rights and obligations under the transaction documents. This document cannot be reproduced except in full, without prior written approval of the Company. Any unauthorized alteration, forgery or falsification of the content or appearance of this document is unlawful and offenders may be prosecuted to the fullest extent of the law. Unless otherwise stated the results shown in this test report refer only to the sample(s) tested.

Attention: To check the authenticity of testing /inspection report & certificate, please contact us at telephone: (86-755) 8307 1443, or email: CN.Doccheck@sgs.com

Room 101-901, Plant 4 & Room 101, Plant 2 & Room 101, Plant 3 & Room 301-501, Plant 3, Jianghao (Banian) Industrial Plant Area, No. 430, Jihua Road, Banian Community, Banian Street, Longgang District, Shenzhen, Guangdong, China 518129 www.sgs.com
 中国·广东·深圳市龙岗区坂田街道坂田社区吉华路430号江源(坂田)工业厂区厂房4号101-901、2号101、3号101-501 邮编:518129 t(86-755) 25328888 sgs.china@sgs.com

检测报告

编号: SZXEC2203148304

日期: 2022年09月26日 第3页,共6页

检测项目	单位	MDL	002
六溴二苯醚	mg/kg	5	ND
七溴二苯醚	mg/kg	5	ND
八溴二苯醚	mg/kg	5	ND
九溴二苯醚	mg/kg	5	ND
十溴二苯醚	mg/kg	5	ND
邻苯二甲酸二丁酯 (DBP)	mg/kg	50	ND
邻苯二甲酸丁苄酯 (BBP)	mg/kg	50	ND
邻苯二甲酸二(2-乙基己基)酯 (DEHP)	mg/kg	50	ND
邻苯二甲酸二异丁酯 (DIBP)	mg/kg	50	ND

备注: 样品的检测是基于申请人要求混合检测, 报告中的混合检测结果不代表其中个别单一材质的含量, 该检测数据仅供参考。

除非另有说明, 参照ILAC-G8:09/2019, 使用简单接受 ($w=0$) 的二元判定规则进行符合性判定。
 除非另有说明, 此报告结果仅对检测的样品负责。本报告未经本公司书面许可, 不可部分复制。
 检测报告仅用于客户科研、教学、内部质量控制、产品研发等目的, 仅供内部参考。



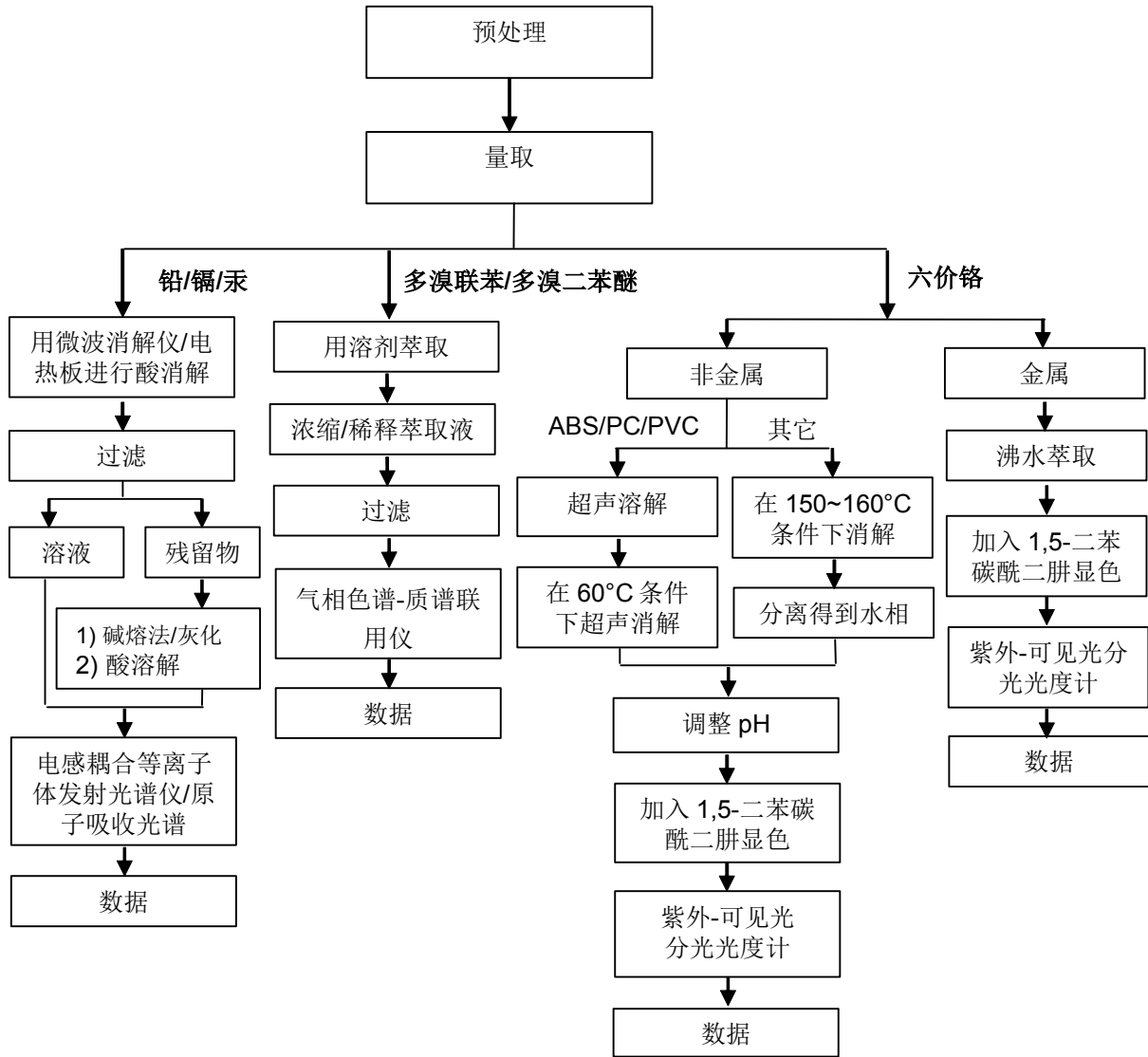
Unless otherwise agreed in writing, this document is issued by the Company subject to its General Conditions of Service printed overleaf, available on request or accessible at <http://www.sgs.com/en/Terms-and-Conditions.aspx> and, for electronic format documents, subject to Terms and Conditions for Electronic Documents at <http://www.sgs.com/en/Terms-and-Conditions/Terms-e-Documents.aspx>. Attention is drawn to the limitation of liability, indemnification and jurisdiction issues defined therein. Any holder of this document is advised that information contained hereon reflects the Company's findings at the time of its intervention only and within the limits of Client's instructions, if any. The Company's sole responsibility is to its Client and this document does not exonerate parties to a transaction from exercising all their rights and obligations under the transaction documents. This document cannot be reproduced except in full, without prior written approval of the Company. Any unauthorized alteration, forgery or falsification of the content or appearance of this document is unlawful and offenders may be prosecuted to the fullest extent of the law. Unless otherwise stated the results shown in this test report refer only to the sample(s) tested.

Attention: To check the authenticity of testing / inspection report & certificate, please contact us at telephone: (86-755) 8307 1443, or email: CN.Doccheck@sgs.com
 Room 101-901, Plant 4 & Room 101, Plant 2 & Room 101, Plant 3 & Room 301-501, Plant 3, Jianghao (Banian) Industrial Plant Area, No. 430, Jihua Road, Banian Community, Banian Street, Longgang District, Shenzhen, Guangdong, China 518129 www.sgs.com.cn
 中国·广东·深圳市龙岗区坂田街道坂田社区吉华路430号江豪(坂田)工业厂区厂房4号101-901、2号101、3号101、3号301-501 邮编: 518129 t (86-755) 25328888 sgs.china@sgs.com

附件

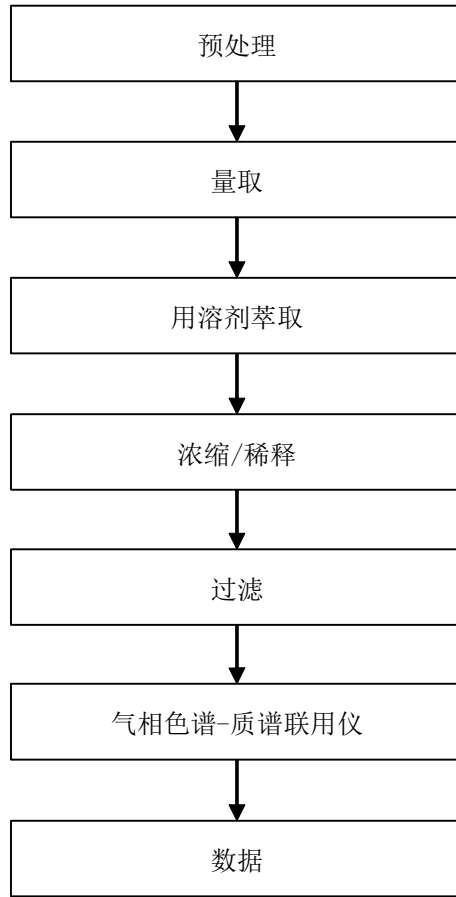
Pb/Cd/Hg/Cr⁶⁺/PBBs/PBDEs 检测流程图

1) 样品按照下述流程被完全消解（六价铬和多溴联苯/多溴二苯醚测试除外）。



附件

Phthalates 检测流程图

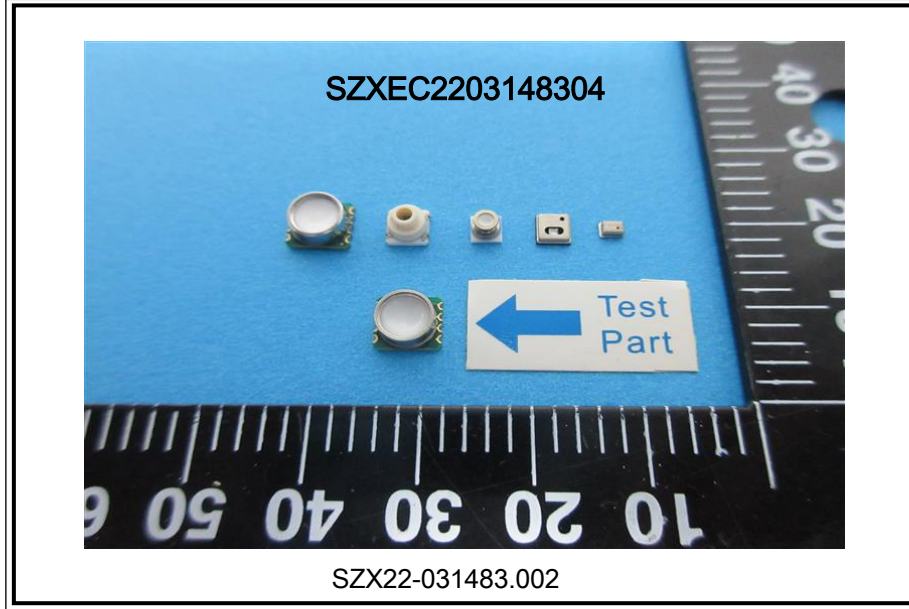


Unless otherwise agreed in writing, this document is issued by the Company subject to its General Conditions of Service printed overleaf, available on request or accessible at <http://www.sgs.com/en/Terms-and-Conditions.aspx> and, for electronic format documents, subject to Terms and Conditions for Electronic Documents at <http://www.sgs.com/en/Terms-and-Conditions/Terms-e-Documents.aspx>. Attention is drawn to the limitation of liability, indemnification and jurisdiction issues defined therein. Any holder of this document is advised that information contained hereon reflects the Company's findings at the time of its intervention only and within the limits of Client's instructions, if any. The Company's sole responsibility is to its Client and this document does not exonerate parties to a transaction from exercising all their rights and obligations under the transaction documents. This document cannot be reproduced except in full, without prior written approval of the Company. Any unauthorized alteration, forgery or falsification of the content or appearance of this document is unlawful and offenders may be prosecuted to the fullest extent of the law. Unless otherwise stated the results shown in this test report refer only to the sample(s) tested.

Attention: To check the authenticity of testing / inspection report & certificate, please contact us at telephone: (86-755) 8307 1443, or email: CN.Doccheck@sgs.com

Room 101-901, Plant 4 & Room 101, Plant 2 & Room 101, Plant 3 & Room 301-501, Plant 3, Jianghao (Banian) Industrial Plant Area, No. 430, Jihua Road, Banian Community, Banian Street, Longgang District, Shenzhen, Guangdong, China 518129 www.sgs.com.cn
中国·广东·深圳市龙岗区坂田街道坂田社区吉华路430号江豪(坂田)工业厂区厂房4号101-901、2号101、3号101、3号301-501 邮编:518129 t(86-755) 25328888 sgs.china@sgs.com

样品照片:



此照片仅限于随SGS正本报告使用

*** 报告结束 ***